

Galaxies

- [Andromeda Galaxy / M31](#)
- [Triangulum Galaxy / M33](#)

Andromeda Galaxy / M31

Messier 31



“ My best photo of the Andromeda galaxy - [Full resolution picture available on Telescopius](#)

Details:

- Date: 22/Aug/2022
- Exposures: 80x1min Lights, 10x1min Darks
- ISO: 1600

Equipment:

- Camera: Canon 6D
- Telescope: Svbony Apochromatic 80/448 mm SV503 80ED Doublet (0.8x reducer/flattener)
- Mount: EQ5 modified with Onstep

Description

The Andromeda Galaxy is a barred spiral galaxy and is the nearest major galaxy to the Milky Way. It was originally named the Andromeda Nebula and is cataloged as Messier 31, M31, and NGC 224. Andromeda has a D25 isophotal diameter of about 46.56 kiloparsecs (152,000 light-years) and is approximately 765 kpc (2.5 million light-years) from Earth. The galaxy's name stems from the area of Earth's sky in which it appears, the constellation of Andromeda, which itself is named after the princess who was the wife of Perseus in Greek mythology.

[Find more information about the Andromeda Galaxy on Wikipedia](#)

Personal Stats

First observation

<input type="checkbox"/>	19/08/2022
<input type="checkbox"/>	Santa Cruz, Portugal

Imaging sessions

Date	Bortle Class	Total Exposure Time
22/8/2022	Class 5	2h (60x2min)
22/8/2023	Class 5	1h20min (180x1min)

Captured media

Photographs



“ My best photo of the Andromeda galaxy - [Full resolution picture available on Telescopius](#)

Details:

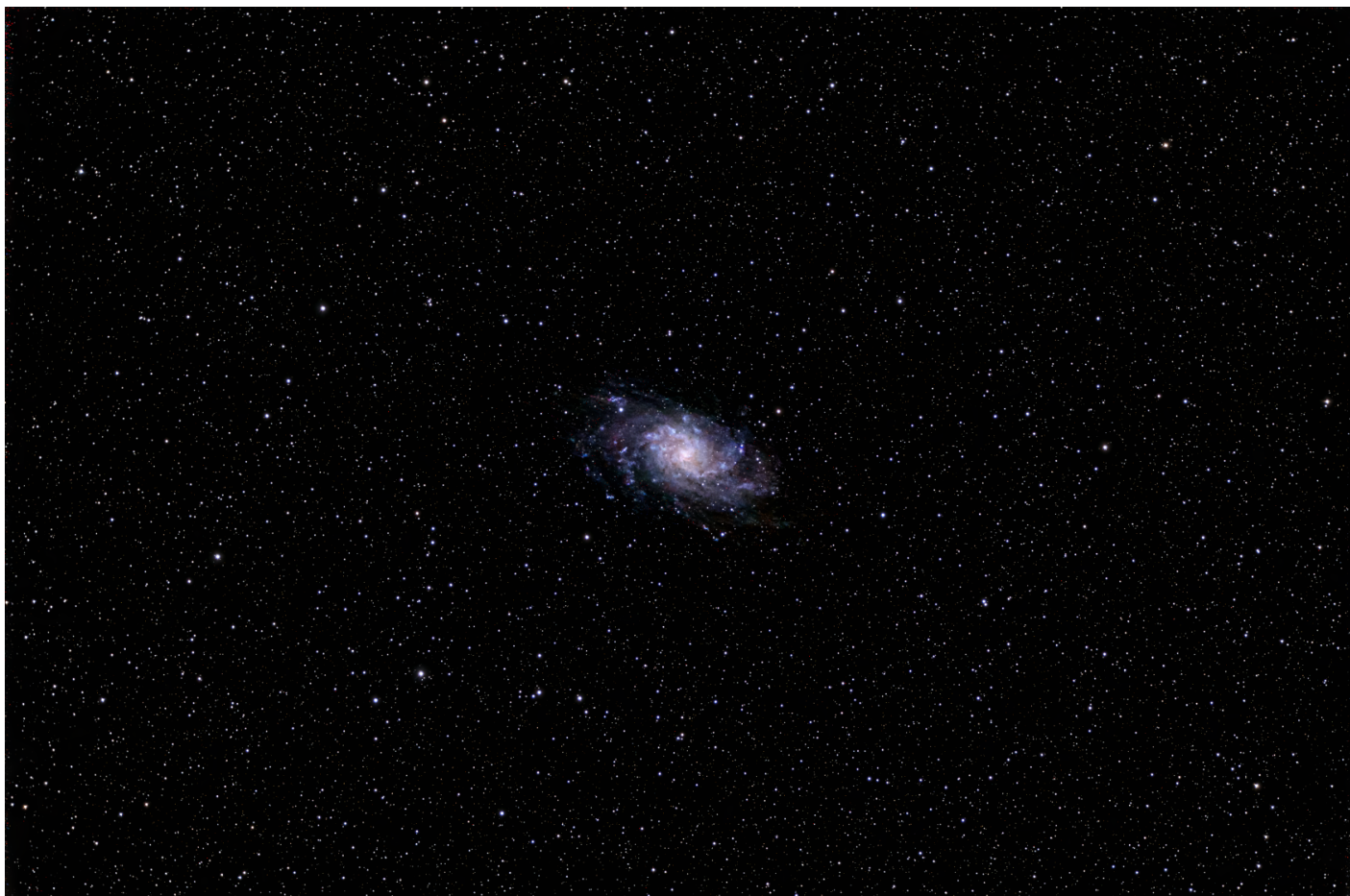
- Date: 22/Aug/2022
- Exposures: 80x1min Lights, 10x1min Darks
- ISO: 1600

Equipment:

- Camera: Canon 6D
- Telescope: Svbony Apochromatic 80/448 mm SV503 80ED Doublet (0.8x reducer/flattener)
- Mount: EQ5 modified with Onstep

Triangulum Galaxy / M33

Messier 33



“ My best photo of the Triangulum galaxy - [Full resolution picture available on Telescopius](#)

Details:

- Date: 31/Aug/2024
- Exposures: 63x1min Lights, 10x60min Darks
- ISO: 800

Equipment:

- Camera: Canon 6D
- Telescope: Svbony Apochromatic 80/448 mm SV503 80ED Doublet (0.8x reducer/flattener)
- Mount: EQ5 modified with Onstep

Description

The Triangulum Galaxy is a spiral galaxy 2.73 million light-years (ly) from Earth in the constellation Triangulum. It is catalogued as Messier 33 or NGC 598. With the D25 isophotal diameter of 18.74 kiloparsecs (61,100 light-years), the Triangulum Galaxy is the third-largest member of the Local Group of galaxies, behind the Andromeda Galaxy and the Milky Way.

[Find more information about the Triangulum Galaxy on Wikipedia](#)

Personal Stats

First observation

<input type="checkbox"/>	31/8/2024
<input type="checkbox"/>	Canadelo, Portugal

Imaging sessions

Date	Bortle Class	Total Exposure Time
31/8/2024	Class 3	1h03min (63x1min)

Captured media

Photographs



“ My best photo of the Triangulum galaxy - [Full resolution picture available on Telescopius](#)

Details:

- Date: 31/Aug/2024
- Exposures: 63x1min Lights, 10x60min Darks
- ISO: 800

Equipment:

- Camera: Canon 6D
- Telescope: Svobny Apochromatic 80/448 mm SV503 80ED Doublet (0.8x reducer/flattener)
- Mount: EQ5 modified with Onstep